

# SAP ERP Based PM Module

S.Padmapriya<sup>1</sup>, Sree Raja Balaguru<sup>2</sup>, P.Yashwanth<sup>3</sup>, H.Ashwin<sup>4</sup>, A.Raghul<sup>5</sup>

<sup>1</sup>Professor, Computer Science and Engineering Department, Chennai,

<sup>2</sup>Asst.Execuive Engineer, TNEB, Chennai,

<sup>3,4,5</sup>Final year students, Dept. of CSE

<sup>1,3,4,5</sup>Prathyusha Engineering College, Thiruvallur, Chennai

<sup>1</sup>padmapriya.it@prathyusha.edu.in, <sup>5</sup>raghulcni12@gmail.com

## Article Info

Volume 83

Page Number: 3018-3021

Publication Issue:

May - June 2020

## Article History

Article Received: 19 August 2019

Revised: 27 November 2019

Accepted: 29 January 2020

Publication: 12 May 2020

## Abstract

Maintaining the particular plant in SAP Enterprise Asset Management (SAP EAM) is more than just a routine check-up. The PM module in the sap Enterprise Resource Planning (ERP) has a rich mechanization features which are static in nature and integrates seamlessly with assorted modules. Our main objective is to have the highest possible performance in terms of health, safety, availability, efficiency and asset integrity for all types of power station. In order to manage all maintenance procedures. We had to implement operating process systematically using SAP-Plant maintenance.

**Keywords:** SAP, ERP, PM

## 1. Introduction

With the introduction of ERP systems, any educational system, the data in their statistics device is in the document or a folder, an e-book, or digital information from any of the electrical device. The ERP device in which the quality answer for the information system that remains your system simple after it has built the structure of the system in over a period. Many of the resource usage is the component of which enterprise the inclination for attaining first-class outcome to the prevailing structure. Structure control is the largest mission to any of the field to gain the favoured desires, excellent quality and the targets. ERP structures are followed by the numerous educational organizations for key managerial and theoretical services. In an educational organization the combination of all enterprise resources represents the collection of systems for human resource management and finance that was once reinforced through discrete and often incompatible data applications. Nowadays, industries are renewing the human assets and turning them into one of the essential features of the challenge management. In an organization plant maintenance functions are fully integrated and mainly focusing on management, recruitment and providing direction for the people who are working.

## Enterprise Resource Planning System

ERP is a software that combines all streams and functions across an organization onto a computer system and serves

all the department's particular needs. ERP is a common name for all software provided by various vendors. Some of the Enterprise vendors are SAP, ORACLE, BANN, Microsoft etc. The ERP solution through SAP (a software package) is found to be suitable to deal with our huge network of business.

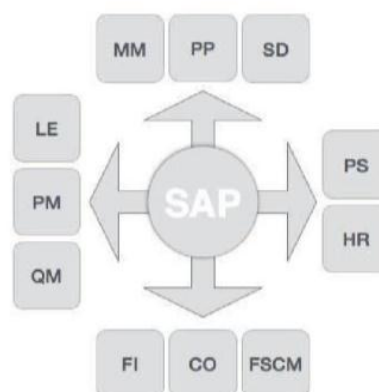


Figure 1: SAP Function modules

## Benefits of ERP SAP

- SAP is primarily using in a company for all business management tasks of which includes paying invoices, managing product and information of customer, and controlling finances.

- SAP is managing the tasks in modules that all work together in single system by sharing information.
- Common database is used in SAP R/3 because as you enter the information in the system and that is made available to the rest of the organization immediately.
- Increasing the inventory leads to greater inventory rate, poor inventory costs, low setup times, and paper work.
- Provides effective and greater control on account, quality and less re-work improves supply demand linkage with remote locations and branches in different locations.

### TIER 3 ARCHITECTURE IN SAP

- APPLICATION LAYER
- DATABASE LAYER
- PRESENTATION LAYER

#### Application Layer

The servers in the Application layer which; include systems with multiple CPUs and a large number of RAM Called Kernel Layer and Basic Layer.

It is mainly executed in Application Layer.

It performs the communication of an Application server in which the dispatcher which distributes the work process to the different work process to makes the job right.

#### Database Layer

Database layer which contain special systems with large and speed hard-drive Layer which stores the information is known as database.

- Business data can be a data store, SAP data, SAP of tables, Programs. • Examples – Oracle, MS SQL server, IBM DB/2, Siebel, system base, etc.
- Documenting the process of business, baseline scope, refines total schedule which is similarly a pattern.
- Realization –This phase depicts about the system testing, implementation and free it for the production.
- Last Preparation – The final stage is all about testing the artefact, end user training, and managing the system and its activities.

#### ERP based PM Module

- o Requisition
- o Purchase order
- o Reservation
- o Good issued

#### Determination of Requirements

For the company which requires the material and services and which the supplier can fulfil the customer needs. A list of is made and checked by a senior authority and the give to the institution. After the approval, a common list is made that is said to be a purchase order with another level of improvement which is send to the customers.

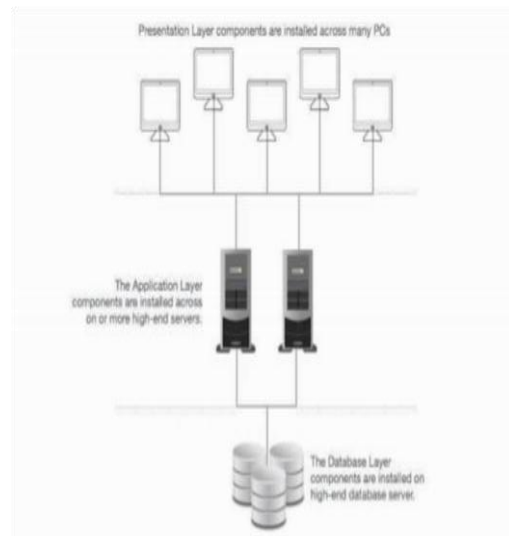


Figure 2: Architecture of SAP

#### Presentation Layer

- When the presentation layer is ready , the user can enter input in the screen
- Presentation switches the each operation form one to another process

#### Phases of ERP SAP

SAP is not just a software package, which can be loaded in a computer and used. It is a stage by stage development process. It involves many stages developed by a huge team for at least 18 months of work.

The phases of ERP, i.e., Accelerated SAP are mainly for a fast, effective and well-organized method.

- Project Preparation – This phase defines the objective & goal, resources, scope, schedule and strategy
- This phase illustrates about the requirements,

#### Purchase Requisition

The Procurement process in all company starts with collecting the needs. Once those requirements are collected, then we should need to inform the purchasing company. The list of Requirement should be documented as purchase requisition.

#### Path to create the purchase requisition

Logistics => Materials Management => Purchasing  
=>Purchasing Requisition => Create

**T Code: ME54N**

#### Goods Issue

Ordering by its conditions and which the quality is checked .Based upon the type and the stock it help the good list. It will show the increase of a stock.

#### Path to create the goods issue

Logistics => Materials Management  
=> Inventory Management => Goods  
Movement => Client => Customers

**T Code: MIGO**

#### Invoice Verification

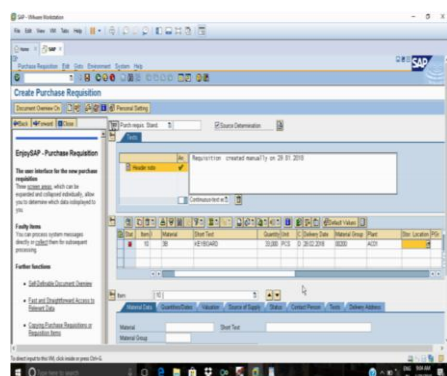
Every company need to acquire the particular goods and their services to update and complete its business

requirements .At first the products are procured from the vendor and placed in the organisation by the goods list, which we need to pay to the vendor for the goods and services which we acquired .The details of the particular materials which are given by the vendor and the amount for the goods are need to be documented is called as the invoice .we should verify the invoice before our payment to the vendor. This process is called as invoice verification.

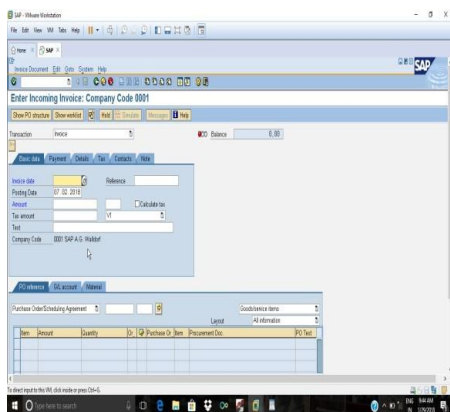
**TCODE: MIRO**

## 2. Result and Discussion

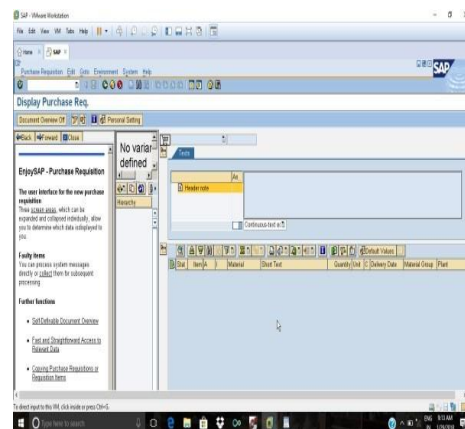
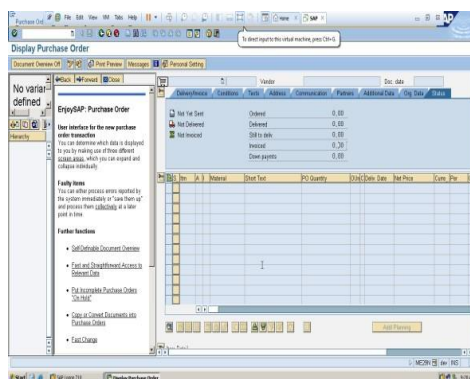
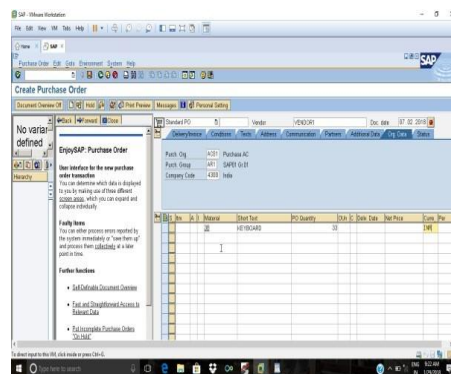
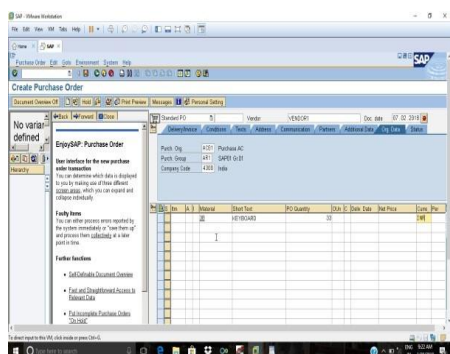
### Display Purchase Requisition



### Invoice Verification



### Final Hierarchy



## 3. Conclusion

Nowadays several educational organizations moves to the traditional information technology systems. They were developed to satisfy some specific risks and provide reviews and evaluate the events which have already captured. The ERP is the best solution for keeping the system normal and building the system architecture of any information system. In today's world it is necessity for any organization or institution to change their organizational information into real time to achieve the goals successfully.

This provides a dominant solution for data manipulation handling in an educational organization. The employee effectively manages the data/information about the people in an organization and integrates it with

other SAP modules and external systems. Hence the implementation of SAP PM Module helps to provide unified process, builds operational efficiency, and minimizes the time complexity while transactions and reduces the pressure of personnel.

## References

- [1] LOCKARD, ROBERT (29 Nov2010),”3 Advantages of inventory management software” Retrieved 23Nov2012. (REFERENCE: INVENTORY MANAGEMENT SYSTEM- Wikipedia under reference).
- [2] MARGARET ROUSE, “Billing Of Material” “\_x005F\_x0001\_”<http://www.searcherp.techtarget.com/definition/billof-materials>”.
- [3] BOEDER, JOCHEN; GROENE, BERNHARD, “The architecture of SAP ERP: four main level of integration” February 2014, ISBN9783849568146.
- [4] INVENTORY TRACK from [http:// www. Jollytech. com/ product/ inventory-track/ index.php \\_x005F\\_x0001\\_](http://www.Jollytech.com/product/inventory-track/index.php_x005F_x0001_)
- [5] Dr. S. Padmapriya , T. M. Nivethitha , V. S. Padmini , K. Pavithra , V. S. Sriraja Balaguru , G. Varun Kumar , S. Karthik “Implementation Of Employee Quarters Management System In ERP SAP Foran Organization”, Test Engineering & Management, Vol 83: March/ April 2020