

Study of Migration and Mobility in the Age of Disruption with Socio-Economic Changes

Jason lee

Research Scholar, University of Australia

Article Info

Page Number: 01 - 04

Publication Issue:

May-June 2019

Article History

Article Received: 09 February 2019

Revised: 24 March 2019

Accepted: 15 April 2019

Publication: 30 June 2019

Abstract: It has been declared that the term mobility is familiar with a movements of human life in World. The study of mobility shows how the human life is critical in the behavior and environment of living. These is bound with aspects of unequal power relation and various forms. In every age this migration can happens with the percepts of living and thinking of human. The disruption is main problem in age of living human, these disruption in every matter may lead to the migration problem as well as other health problem. In this paper the study of induce reason have done for the term migration and mobility in the age of disruption in human. We have taken many interviews in India and other countries for finding reasons of migration and mobility in depth. The men and women in different ages have clear symptoms of these today issues. These paper engages in competition of age of disruption in human life lead to migration. The built in structure shows that the movement of person migrate from one place to another and these is most significant moment in their life, so how someone looking back to this situation. These situation of last stories may give mobility of thinking this stuck.

Keywords: migration, mobility, socio-economic change.

1. INTRODUCTION

In the past stories, the people had migrated from one border to another border to find work. That was most usual factor for migration, because the need of person is only full field by work and money. The past stories in famous books that have told these prospect as a main factor of moving from border. These paper is a study of mainly working class of residential of one city to another. To fixing these problem we have study the four stories and taken multiple interviews of people.

The people are moving for prosperity away from their family. These have produced the mobility in the age disruption. The people of age 18 to 25 year old are migrating for work, job and also for education. The pressure of work and the distance from family may lead to multiple problem in the human body. This can produce the depression of missing memories in human mind.

2. GLOBAL MIGRATION AND LABOR MARKET

The place of work in the form of industries is increasing widely in the World, so these is also required the set of workers to work in that industries. The people are moving for prosperity. These is vary usual factor of migration because people have to move for money and work from cities and countries. In India men and women ratio have been widely increasing and it seems that is have same ratio in all over World. The below figure shows the image for global migration. The global migration is a process of moving from one countries to another countries in the search of work. Do to less education or no education of people, they have allocate for work that may be labor work for such persons. This effects the sociality of country and also to the economic growth of countries. There are lots of people who are migrating all over the world and the ratio of women as compare to men is higher.

The allocation sometimes happens with a family and sometime not, it leads to uncertain issues for a person in their workplace. The past stories of migrated person tell that he face lots of mental

issues after migration. After migration without family, he tell that he wouldn't get job for four to five months, so he didn't have money to survive in new country. Also he faced the culture and language problem in that place. So month passed and he got labor job in company construction. Again due to language and less education he had to face lots of mental stress. Without family the mental stress increases to the level of violence in the workplace. It seen in the story that global migration and labor market lead to lots of issues.



Fig 1: Global Migration and Labor Market

The Labor market have wide scope in all over world. So the people are migrating with family as shown in figure. There is no age limit for moving borders, because family includes children, old man and women. It has studied that children will get settle down in migrate cities for further age work. So it leads to population and financial factors of countries.

3. PHASES OF MIGRATION AND MOBILITY

The ability to move freely and easily is depend upon the phases of migration. There are four main phases of migration as shown in figure.

- 1) Pre-migration phase
- 2) Movement phase
- 3) Arrival and Integration phase
- 4) Return phase

These four phases are widely explain in the figure itself. The pre-migration phase comes when human rights violation occurs in events of moving, also for force migration flows and economic disparities. In movement phase duration, circumstances and condition of journey affects the person mind. Also if it is abused by someone and violence in work place, these leads to irregular migration flow. The person have freedom in our country that much of freedom is not given to labor or a person, who migrate for work in another country, due the culture, language and education problem. Somehow a work can change such type of problems if that person is highly educated and work in high level designation in another country.

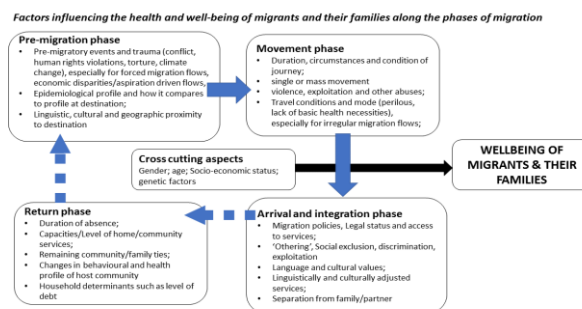


Fig.2: Phases of Migration with Family

The arrival and integration of person may be due to migration policies and legal status of industries. Some work places are not allowed to have family with them so the separation from family and partner leads to stress that will affect person health. In return phase the parson somehow change in duration of absence, the level of debt in household determination is change, and health profile may change. The age and gender these are cross cutting aspects in terms of family separation migration. It has change the socio-economic status of country. So these affects their family health and person mind.

4. PROPOSED DESIGN

In proposed design we have shown the age of disruption of mobility. The age, sex, language and appearance these four factor are responsible for variety of immobility. These discrimination factor are caused health problem due to stress, violence and past memories. The self-report of health shows that these uncertain factors of migration have attacked of 82% people in the World. These percent report is due to the work and requirement of work person can do in workplace. Every work have different class, different person is working in different classes. The persons age, sex, language and appearance are highly affected the designation in workof person. These designation is depend upon the education of person and the company who is giving work to them. Traditionally men have lots of work as compare to women but now a days it become opposite. That is why the report shows that women work ratio is higher than men in any work sector. As work comes with many more uncertainty for human in terms of clinical issue or in social issues.

In men and women the ratio of stress is higher due the migration and separation from family. The work load in any place is increased, so these may increase stress and violence in the field of labor markets. The back memories are responsible for

these problems it leads to health issues. The clinical report of health seems the most of the health diseases comes from stress and violence. These may results in health issue like diabetes, blood pressure and migration. It tends to narration.

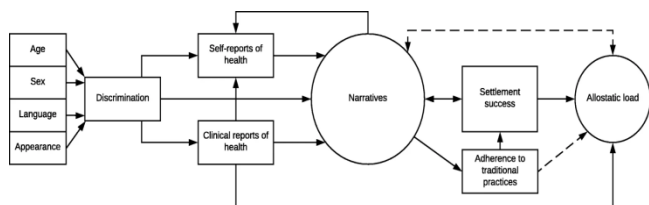


Fig. 3: Proposed Design Flow

The settlement success is found by compromising with such situation and by going away from that situations. It may leads to family member separation and complications in family. These may produce violence in work place and abuse by someone. The statistical practices gives such result of allostatic load on person.

5. SOCIO-ECONOMIC CHANGE

First, the method of transition from state about to a free enterprise befell with nice speed and needed complicated economic restructuring that semiconductor diode to substantial labor reallocation across state and personal sectors and across industries.

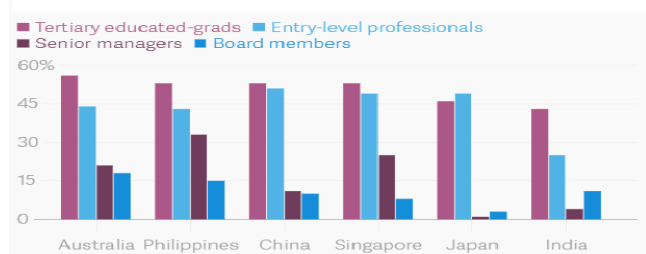


Fig.4: Women as a Percentage of total men in the Workforce

The speed and comprehensiveness of the method was new. The challenge was even bigger because the transition befell at the same time with increasing world-wide interconnection within the markets, technological amendment and economic process.

I recommend that the expertise of such dramatic structural amendment made a replacement empirical reality to be studied by migration theories that were developed in terribly completely different contexts. The impact of structural amendment will be best understood through the analysis of market dynamics and completely different sorts of risks and opportunities that transition has made.

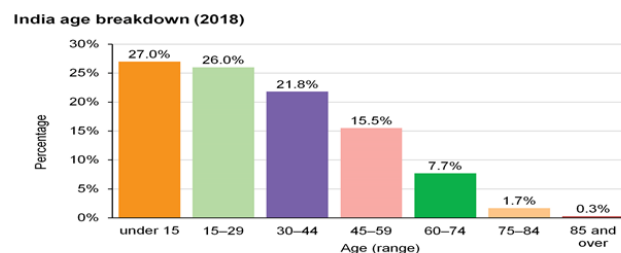


Fig. 5: India Age Breakdown

In above figure an age breakdown is shown in percentage. The age under 15 have more percentage in India. From 15 to 29 age, the work age starts, in that percent is higher. These age person is either work in same countries or migrate for work in other work place. In the age 30 to 44 people have to stay in same work place due to age limit and family needs. Till 60 to 75 age people do work. In the old age people stop allocating and working in large sectors. As then age increases the migration ratio of person goes down. This is a report of market space that shows this age terms percent wise. The Analytical tools found such wide ratio of global market in India phases of work.

Focus on market imbalances and mismatches between newly-emerged employment opportunities and talent structures genetic from the recent regime will give helpful analytical tools for characteristic the profiles of individuals tormented by the processes United Nations agency represent a possible pool of labor migrants.

The Worlds countries men and women comparison is done on the basis of workforce. The Tertiary educated grade is higher among all class of labor. The education and job post classes are different for all working skills. The global displacement is a new trend for today's generation people. They feel so proud while migrating places. so year by year this ratio is increasing as shown in below figure. The youngsters are moving rapidly for higher education studies in other countries and after that with craze of countries the wants to settle there. They do jobs in that countries after education and got married in this the condition in the recent year. These leads to economic growth of countries and also creates family separation situation. These situation comes with many health problems due to past memories of family. The united agency produce this report for a migrated people after circulation and communication with migrated people.

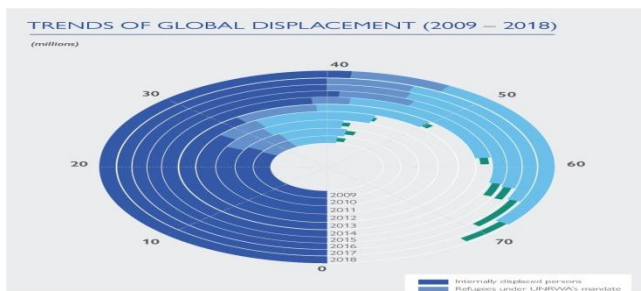


Fig. 6: Trends of Global Displacement in 2019-2018

3. Michael, "The impact on Enlargement in migration flow", CSE department of innovation, 2013.
4. L. Thomas, "Review of Migration and self-selection in phase of disruption", an international analysis, 56,2014.
5. Ben Regally, "Reading life histories through the lens of mobility and fixity", Environment and planning, Volume 33, 2015.

Professor and higher educated person have second highest ration. The politician and senior managers in work place have minimum ratio of stress this may due to non-financial issues to them. The labor always have to suffer from this migration and health issues while working. The women have large percentage as compare to men in workforce. The individuals comes from different culture and languages, so the language and living issues occurs while doing work in other cities. Low educational attainment, low economic status and low status of person may produce different problems for them in work distance. In that situation a separation from family and peers leads to depression, stress and unwanted violence of person. Due to lower education person have to face limited access to jobs, housing and poor working condition status. The community gives social exclusion and discrimination to the behavior of person. The social change need to process for discriminatory policies and limited health and also to the social protection public services.

6. CONCLUSION

The past stories are study and it is found that for working purpose people have to migrate from one cities to another with or without family. These separation from place and family leads to mental health issues of person. Also the work load, education and language difference of person make person to cover with stress and violence in workforce. So the social and economic changes are necessary to resolve these issue, to have mobility.

REFERENCES

1. Lucia. "Theory of Migration from EU East to West flow", University College London, April 6-9, 2011.
2. M.K. Singh. "Study and Review of Mobility in age of disruption", IJR, volume 16, May 2009.