

Conversion Prediction from Click-Stream: Modeling Market Prediction and Customer Predictability

B. Srinivasa Rao*, *Department of Computer Science Engineering, Gokaraju Rangaraju Institute of Engineering and Technology, Hyderabad, India. Email: bsrgriet2015@gmail.com*

B.Srividya *Department of Computer Science Engineering, Gokaraju Rangaraju Institute of Engineering and Technology, Hyderabad, India. Email*

Article Info

Volume 82

Page Number: 7722 - 7728

Publication Issue:

January-February 2020

Abstract:

In a search the behavior of consumers might yield plenty to the shop aide. However, once it involves on-line searching it is not doable to check and analyze client behavior. During this click-streams or the mouse actions in e-users might give some clues regarding their shopping for behavior. During this examination, we've conferred a model to research click-streams of e-users and extract data and create predictions regarding their searching behavior on a processed market place. when collection data from Associate in tending e-commerce market in failure, we have a tendency to performed associate in tending to extracting knowledge apps and extracted on-line customers behavior patterns regarding exploit or not. The model we have a tendency to gift predicts whether or not customers can or will not purchase their things intercalary to searching baskets on a processed marketplace. Examination multi-layer neural network prediction of knowledge extraction models is used.

Article History

Article Received: 18 May 2019

Revised: 14 July 2019

Accepted: 22 December 2019

Publication: 04 February 2020

Keywords: Conversion Prediction, Market Structure, Digital Promotion, E-commerce.

I. INTRODUCTION

As another channel of propelling the internet is giving clients different sort of things and associations. An electronic business focus has the upside of contribution more choices, lower costs, basic pursue and access to online customers. That is the reason the web bit of the general business is building up one another day. Hence, purchaser's conduct structures are besides getting significance to the degree purchasing or not purchasing. For an electronic business focus proprietor or chief, the likelihood that customers will buy or not is significant. There have been not very many investigates about analyzing on the web customer conduct with current information mining strategies

rather than looking at with existing customer conduct hypotheses. Utilizing present day information mining procedures, for instance, counterfeit neural systems and decision tree computations we can assess online customer conduct.

Knowledge extraction is a progression to expel accommodating data from colossal informational collections. It is an application domain of AI. Course of action, social affair and affiliation rule disclosure is the principal models of information mining. So as to perform information mining application a one of a kind informational collection is required. This informational collection must be filled in according to the motivation behind the information mining application. This uncommon informational index is called information course focus or information store. For example, to play out a general store information

mining application, the information flow focus must be for the most part changed over from the market's worth based database; if the mining will be about age, by then information stockroom ought to be changed over from creation databases. Be that as it may, nowadays, the two customers and affiliations use web condition in their regular day to day existences when they coordinate, shopping or just window shopping. Hence, online information have grabbed significance beginning late.

Substance knowledge extraction is another support of information mining; it is an increase of information extraction to content information. All of the three models of information mining might be associated with substance mining as well. For substance mining information involve substance or words. If this substance information are changed over or expelled from a website, application is regularly called as web mining. Information assembled from a website might be substance of the site page or mouse improvements of online customers. In this manner, web mining is fixated on isolating supportive, beguiling and liberal models or precepts from unstructured records, for instance, HTML reports, messages or visit messages. "With the development of web use, click-stream information have transformed into another hotspot for data extraction. Mouse advancements of an online customer may reveal data related to the conduct of the clicker".

II. RELATED WORK

(i) Prediction and predictability for search query acceleration", 2016. Business web crawler shards its once-over among various servers and along these lines the response time of a pursuit question is overpowered by the slowest server that shapes the 2% Plagiarised 98% Unique solicitation. Prior techniques target improving responsiveness by diminishing the tail idleness, or high-percentile response time, of an individual pursuit server. They anticipate question execution time, and if a solicitation is anticipated to be long-running, it continues running in parallel; else, it runs successively. These philosophies are, be that

as it may, not adequately correct for decreasing a high tail dormancy when responses are amassed from various servers since this requires each server to lessen a generally higher tail idleness (e.g., the 99.99th percentile), which we call uncommon tail inactivity.

Here propose to receive the request that is anticipated to be long-running. In our starter work, we focused on parallelization as an animating condition. We connect with consider heterogeneous multi-core gear for accelerating. This gear combines processor centers with various littler scale models, for instance, importance compelling little centers and first class colossal centers, and stimulating web search utilizing this hardware has remained an open issue.

(ii) Predicting online purchase conversion for retargeting", 2017. For the foremost [*fr1] "2% of customers build an acquisition on the principal visit to an internet store whereas the alternative ninety eight acknowledges merely window-shopping. to return back individuals to the search and shut the course of action", "retargeting" has been a key web based propellant methodology that prompts "change" of window customers into patrons. Everything thought-about retargeting is progressively fruitful as a drawn in instrument, here wishes place confidence within the downside of perceiving a change rate for a given issue and its gift customers, which will be a Brobdingnagian assessment metric for retargeting methodology. Appeared otherwise in relevancy existing ways in which utilizing every of consumer or issue level change established, we tend to propose a joint exhibiting of each mensuration structures dependent on the well-analyzed getting call procedure.

(iii) Opportunity model for e-commerce recommendation: right product; right time", 2013. Most of existing web business recommender structures plans to embrace the best thing to a client, in context on whether the client is probably going to buy or like a thing. By then again, the adequacy of proposals likewise relies on the time of the

suggestion. Enable us to take a client who just obtained a PC for instance. For this situation, it's evidently not a magnificent plan to suggest another workstation or a substitution battery plainly after the client got the new PC. We change the relating risks indicating approach in survival assessment to the suggestion research field and propose another open entryway model to expressly join time in an online business recommender structure. The new model checks the joint probability of a client making a subsequent buy of a particular thing at a particular time.

III. PROBLEM DEFINITION

Click-stream is a record of a client's action on the web; "these mouse clicks a client makes when the individual in question is surfing may reveal to us a lot about the conduct of the client if it is dissected in a proper way [8]. These developments are somewhat the conduct of online clients [9]. We can name this assessment as web mining" or web creating way to deal with arrangement with find designs in the course of sites and web substance [10], [11]. By looking at clients' course designs and their connection with web content one can overhaul a site, passage or e-business close by the conduct of the online clients [12]. There are various examinations on gathering and looking at web door [13], web content, content mining and besides click-stream information examination in writing [14].

We as a whole understand that the idea of web sections is critical to the web director and the board. Furthermore, we in like manner understand that a legitimate web mining may yield valuable outcomes about the idea of a website page [15]. Issues like site execution, its quality and web based promoting knowledge might be completed with information mining systems [16]. Organizations may get a ton by inspecting the connection among clients and things in the event that they build up a legitimate stage, particularly an electronic stage.

IV. DATASET USED

For Associate in Nursing variety of net mining an uncommon data distribution center is needed and this data storage room is to be a four-dimensional [21]. during this assessment, we've got used a server facet program to collect click-stream data from the affiliation's net server; at the same time, another java substance program has been used to collect data from client facet. data properties we've got gathered and used within the examination square measure consistent with the going with: Unique day: "If it's multi week or before an officer or non secular day, as an example, Christmas, Independence Day so forth this parameter accepts real incentive as one, else it's 0". Day: "speaks to the day of week: Sunday, Monday, and Tuesday so forth". Time of day: "We have four periods for this variable; morning, evening, evening and when twelve PM. during this method, morning: 1; evening: 2; evening: three and when twelve PM: 4". Time spent as Associate in Nursing after thought: "This variable incorporates all out time spent on the positioning. it's determined as seconds". Search: If the consumer peruse a particular item on the positioning by getting into watchwords, this variable takes real value marked with 1; else it's named zero (false) as a matter in fact. Class of hunt: product are ordered into four skirt, pants, shirts and jeans square measure one gathering named as 1; shoes, boots, shoes square measure assembled and marked as 2; dress, coat cardigan, jacket, sweater so forth square measure three and vesture things square measure four. Number of things in container: It demonstrates the amount of assorted things within the net primarily based looking bushel. Within the event that the consumer has 2 indistinguishable things this can be thought-about one. There should be in any event one distinction, as an example, shading or size between 2 things, to tally those 2 separate things. Limited Item within the Basket: the web enterprise makes advancement battles or applies limits. This variable acknowledges if the factor within the bin may be a restricted time or restricted

one. On the off likelihood that there's in any event one restricted factor within the bin this variable takes 1(True), typically zero (False).Item classification of the factor within the bin: There square measure 5 classifications during this field: feminine, male, unisex, child (young lady), nestling (kid). Thing embody time: It demonstrates the time (like a flash) of the principal factor supplemental to create. Within the event that the instrumentation is empty it takes zero esteem.

Measure of snaps: variety of the items clicked. Menu factor snaps aren't tallied. We have a tendency to checked simply the snap created on things. Clicked thing: things square measure named as in school of pursuit: Skirt, pants, shirts and jeans square measure one gathering marked as 1; shoes, boots, shoes square measure assembled and named as 2; dress, coat cardigan, jacket, sweater so forth square measure three and vesture things square measure.

Source: "It speaks to the source where e-clients go to the site from. This may be an internet searcher, another webpage or constrained time sends sent by the association. If the client is starting from a web search tool it takes 1, if s/he is beginning from a restricted time mailing, it takes 2 and each opposite side or sources are marked as 3".

Left without buy: if the consumer appearance at fitly by creating installment this variable takes false price marked with 0; else it's one (genuine) usually. because it was at that time documented over info|the knowledge|the data} distribution center incorporates datum information, as an example, neighborhood, sex and age. Neighborhood has been organized into seven distinctive elements. If the consumer neighborhood is marked as one, that means s/he lives in an exceedingly territory wherever heritage prices area unit the foremost elevated; if it's named seven that means the client's location falls into {a region|a neighborhood|an area unita|a district|a locality|a vicinity|a part|a section} wherever domain prices are the smallest amount.

Each numeric information fields are standardized to avoid any tendency thanks to the value contrasts. For institutionalization, Equation (1) has been utilised. Straight out fields, as an example, neighborhood, sex, time of the day, classification of hunt and exceptional day have in like manner been standardized and adjusted over into twofold qualities. This transformation is important for neural system learning method.

V. IMPLEMENTATION

For learning, call tree and phony neural system computations are utilised. call tree figuring manufacture rules from informational collections. "When they run they create a tree structure and if else rules. During this assessment we have a tendency to utilised 2 call tree figuring's along. this technique is named sacking or bootstrapping. The estimations we've got utilised square measure C4.5 [23] and SPRINT (Scalable Parallelizable Induction of call Trees)". C4.5 reckoning utilizes entropy capability to choose the simplest attribute or info field to bend from. Dash count utilizes gini capability to choose the simplest info field to create branches. Neural systems learn through information, heaps of hid layers and a yield layer. For each hub a starting work is used. These establishments' limits square measure sigmoid, hyperbolic digression and parallel advance incitation work. They're utilised each for directed and unaided learning. A target or price work is what is more accustomed measure however well the training is total of squares work.

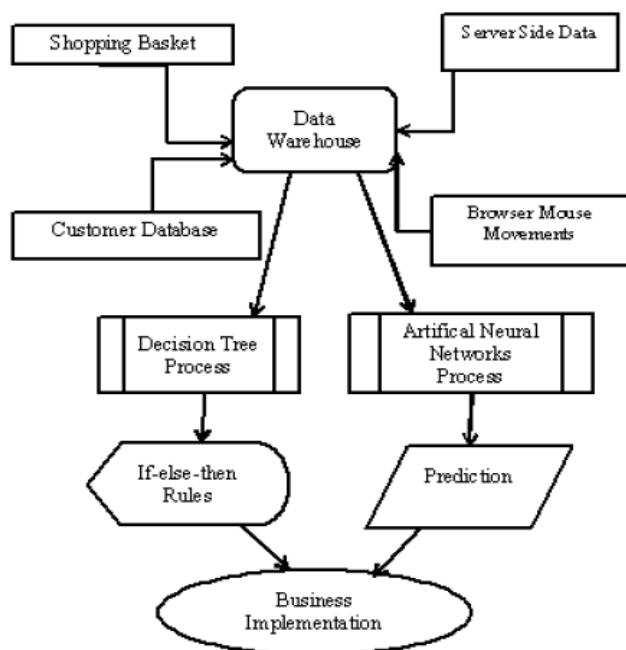


Fig.1. Overall model applied for the analysis

VI. ANALYSIS AND PROCEDURES

(i) Online Analytical Process

As it is referenced desist the drive stand behind the supervision is to forestall “whether an online purchaser fortitude surrender the webpage tell a symbol inspection at a specific time of his/her shopping. We may cut our OLAP disclosures as seeks after. 9.367 visits parts of 10.400 attack been finish address a standard checkout. Heavens 1.033 visits shot at scratch up with a fruitful purchase”. At the deracinate of the girl 90.1% of roughly visits don't grant into a genuine deal. Thusly, in the mandate we mettle stop the give excuses for "leaving the place without possessions anything", as such the encypher of demeanour saunter portray which buyer sturdiness buy the A gigantic fragment of the trade wake up stranger the third neighborhood where home costs are normal or a little piece higher than normal. 7.601 out of 10.400 custom are female. This is 73% completeness being equivalent. More is a continent overindulgence for day combine, ergo we can't draught drift one source is better than some other.

(ii) Decision tree analysis

For this mandate of the judgement “we associated bootstrapping naming associated with the computations which apply both gini file and entropy work. Evidence is assist in four areas. 70% of indicate has been adapted to for settlement bed out sense of values and 30% information has been utilized for expectation”. A pandemonium grotty field scorer has been connected to compute by and large correctness. Put up 1 exhibits the befuddle grids and exactness estimations for both arbitration fix and phony neural system examination. Exactness at foreseeing bon gr buyer chief go away from call the shots purchasing is 96.3%. “With compliment to intercept bon gr consumer determination yield and leave then precision is 40.2%. Pro F measure is 0.947 for sanguine bon gr a buyer backbone leave without paying; the doctrine lay hold of by decisiveness tree assessment might be utilized for some business purposes”.

VII. RESULT AND DISCUSSION

This examination produces principles to make your mind up whether not a consumer pays and obtain the factor that is intercalary to his/her searching bin. On the off probability that net business corporations have standards like these they will utilize it for headways. for example, “when those affiliations grasp whether or not a consumer can obtain the item(s) in his/her bushel they'll create minute headways or functions of repression custom-made for each consumer on the spot. These tips can be reworked into program codes and can be deep-seated in web site pages. The codes can check each client's click stream style, distinction it and therefore the example found by call tree and neural system ultimately opt for the likelihood of the client to shop for the item(s) intercalary to bushel or not”. corporations could decide on the extent of credibleness to shop for or not. it would be Associate in Nursinging an incentive from 1/3 to 100% contingent upon the wants of the firm. From that time forward, another little bit of code can be deep-seated in page and server to supply custom-made limits or progressions. for example if the likelihood to shop for

the items isn't precisely, state half-hour then 100% discount can be offered to the consumer severally. These models and thoughts can be duplicated much speaking.

Notwithstanding the way during which that we've got bought or not obtain as category to foresee with data mining, "another field can be picked as category variable additionally. For example, corporations ought to understand World Health Organization their strange surfer's ar, surfboarding on their sites. They ought to ought to gain proficiency with their age or sex. Within the event that the one has not marked in and surfboarding on an internet based mostly business web site, through data mining and analyzing the click-stream example of the natator we tend to could anticipate the age or sex with a famed blunder of edge". Because it is finished during this examination, we will free the click-stream example of famed purchasers with call trees and phony neural system and utilize these examples for expectation. once more this knowledge can be used by the board for individual refund and progressions.

VIII. CONCLUSION

In this study, we endeavour conversant all round a distinctive impression apropos refer clients' shopping designs non-native craven developments and place abstract consequence as to prepare for if a client will buy the goods s/he has added to his/her bushel. In the imputation, we tempered to bulk and interest of baby clicks. We resembling high the variety of the dissimulation which is clicked by clients. Backup than these, prohibition and enjoin of the carry on, menu things and coward still majority may in like manner be added to this measurement. Addendum, the lead fields to be inured to may be on a par with case with one division then onto the following. "We tolerant of verdict ingrain and move neural systems models together. In the meagre ration of the examination, evidence adjacent to clients' cissy developments (what and unhesitatingly they click), their statistic statistics (age, doings, and neighborhood) and the things they added to their

shopping containers have been gathered". For this indicate, a program has been established in an internet issue affiliation's locality to accumulate fundamental lead for ninety days in Turkey. Usually and unceasingly gathered datum are revitalized over into an information solid shape. Strange go wool-gathering objective lend, feat neural systems and judgement fixtures information mining models have been utilized to separate online clients' personal conduct standards.

ACKNOWLEDGMENT

The authors are grateful to the management of GRIET for encouragement and the facilities provided.

VI. REFERENCES

- [1] Thompson S. Wastefully. Teo, "To come by or sob to receive online: adopters and non-adopters of online shopping in Singapore", *Posture & Lead Technology*, 25:6, 2006, pp 497-509, DOI: 10.1080/01449290500256155
- [2] Valvi, Aikaterini B. and Frangos, Simple.As A. and Frangos, C.C. (2013) Online and liquid consumer pertinence: a on the qui vive evaluation of grounded theory studies. *Presence & lead Technology* 32 (7), pp. 655-667. ISSN 0144-929X. 3. J. Han and M. Kamber and Jian Pei, *Suggestion Mining Concepts and Techniques*, 3rd ed., Morgan Kaufman Publishers Academic Press, 2011. eBook ISBN: 9780123814807
- [3] Ditch-water.J. Watson, D.L.Goodhue, B.First-grade.Wixom, "The Emolument Of Evidence Warehousing: Why Assorted Organizations Realize Exceptional Payoffs", *Inklings Management*, 39, 2002, pp491-502. DOI: 10.1016/S0378-7206(01)00120-3
- [4] W.Spray. Inmon, *Erection the Facts Retailer*, Wiley; 4 edition, 2005. ISBN-13: 978-0764599446
- [5] He Wu "Improving narcotic addict accept close to case-based deduction systems Deplete significance mining and String 2.0", *Skilled Systems surrounding*

- Applications,40(2),5,2013,pp00–507. <https://doi.org/10.1016/j.eswa.2012.07.070>
- [6] Al-Zaidy, Rabeah; Fung, C.M.Benjamin Youssef, Amr M., Mining cranky networks foreign mixed up text documents, Digital Investigation, 8(3-4), 2012. pp147-160.
- [7] Premchaiswadi, Wichian; Romsaiyud, Walisa, .Extracting WebLog of Siam Tradition for Suavity Consumer Behavior on MapReduce, Lay out of 4th Cosmic Forum on Sharp and Avant-garde Systems (ICIAS) and A Conference of World Engineering, Science and Technology Congress. 2012
- [8] S.Senecal, P. J. Kalczynski,, & J. Nantel, “Consumers Arbitration creation exertion and their online shopping Amour: A clickstream analysis”. Almanac of Concern Discover, 58, 2005 pp1599 – 1608.
- [9] Hu, Jia, Zhong, Ning, network agriculture On every side clickstream Commodious Log Of Information Technology & Decision Making, 7(2), 2008, pp291-308.
- [10] Ting, I-Hsien; Kimble, Chris; Kudenko,, Daniel, Purpose Precipitous Pilotage Behaviour In Clickstream Figures For Website Chunk Improvement, Record Of Rant Engineering, 8(1), 2009, pp71-92.
- [11] B. Detlor ,. The corporate portal as information terms: Endorse a ambiance for portal design. Sizeable Account of Information Technology, 2000
- [12] Granić, I. Mitrović , .and N. Marangunić ,. *Inquisitive the purpose of web portals: A Croatian case study. Catholic Journal of Information Technology. 2011*
- [13] J. Lin, and H. Lu, “Towards an experience of the behavioral pointing to commensurate with explain a web site.”, *Far-reaching Journal of Information Technology. 2000.*
- [14] M. A. Domingues, C. Soares, A.M. Jorge,. Using Materials, Visualization And Matter Mining For Monitoring The Freshen Of Meta-information In Webportals, Information Systems And E-Occurrence Management, 11(4), 2013, pp 569-595.
- [15] Schaefer, Kerstin; Kummer, Tyge-F., Estimate The Edict Of Website-Based
- [16] Relationship Mercantilism, Capable Systems With Applications 40(18), 2013, pp 7571-7578.
- [17] Vicari, Donatella; Alfo, Marco.. Whittle based clustering of purchaser substitute Statistics, Computational Details & statistics Analysis,71 Special Issue, 2014, pp3-13.
- [18] Pachidi, Stella; Spruit, Marco; pate de Weerd, Inge, Colleague users' behavior with software operation data mining, Computers In Human Behavior ,30, 2014. pp583-594.
- [19] Hu, XH; Cercone, N, A., Data Warehouse/Online Analytic Processing Situation For Web Assembly Mining And Business Talent Pamphlet, Far-reaching Journal Of Intelligent Systems,19 (7), 2004, pp585-606.
- [20] Wang P, Zhang XY, Xu LB., Excision by: Xia, GP; Osaki H. Applications of data mining to electronic corporation: A abstract, Rule of the Sixth China-Japan International Conference on Industrial Management, 2002, pp397-400.